



Founded in 1966, TYPESA is a leading and independent consulting engineering group in the fields of transport, buildings, water, environment, energy and rural development.

TYPESA has set up a solid international network of subsidiaries and permanent offices having increased its staff to more than **2,500 in 29 countries** all over the world.

TYPESAGroup

**R**aurosgroup

[www.raurosgroup.com](http://www.raurosgroup.com)

RAUROS Group, founded in 2002 and owned by TYPESA since 2015, is a consulting firm that combines civil engineering with the development of **new technologies** applied to control and **assets management** of highways and airports, and highly specialized in analysis of pavements.

Furthermore, it develops Expert Management Systems used by Public Administrations and Private Companies in more than 15 countries.



We offer a comprehensive service that covers all phases of the project



## SERVICES



### CONSULTANCY

Consulting in civil engineering, specializing in **highways, road networks** and airports, specifically in pavements (maintenance plans, pathologies studies and condition reports - quality indicators).



### DATA COLLECTION

In-house **high performance data collection equipment** and the ability to develop tools for interpretation, process, handling and visualization of data from different types of survey equipment.



### DEVELOPMENT

Activities focused on software implementation of **expert management systems of infrastructures**.

## PRODUCTS



Road Asset Management System



Airport Pavement Management System



High Voltage Lines Management System

HEAD OFFICE

Calera, 3

28760 Tres Cantos

Madrid, SPAIN

Tel: +34 916 592 238

e-mail: [rauroszm@rauroszm.com](mailto:rauroszm@rauroszm.com)

[www.raurosgroup.com](http://www.raurosgroup.com)

# ICARO

## Road Asset Management System

### MULTIPLATFORM



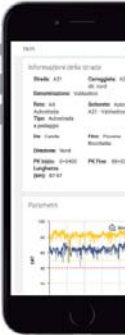
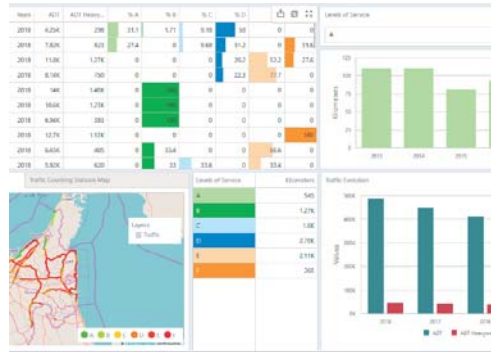
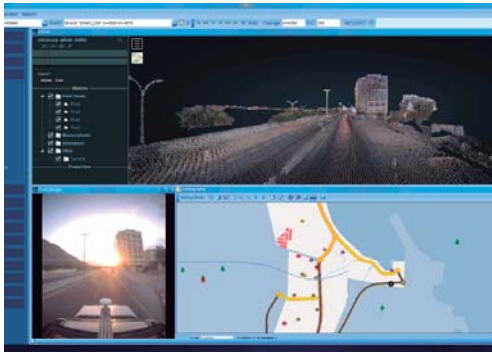
Technician  
ICARO **Desktop**



Decision-maker  
ICARO **Business Intelligence**



Inspector  
ICARO **Mobile**



Functional and user-friendly system for technicians used to manage huge amounts of information. This system allows to upload and manage data using a unique tool that brings them **detailed queries and reports in an easy way**. Using this system it is possible to **manage and control information from different fields**, necessary in the day to day management.

This system has been developed specially for decision-makers, which require a **global view of the road network**. With reports, graphs, maps and dashboards purpose-designed for this kind of user, who require information in a different way.

This system has been developed taking into account the special requirements of inspectors on the field, with climate and discomfort restrictions. It includes tools designed for data uploading during **inspections of pavements, assets and bridges**.

### MODULES



Geometry



Assets



Survey



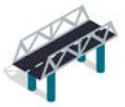
OPEX



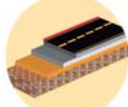
Traffic



Road Safety



BMS



Pavements



Segmentation



PMS



Thematics



Queries



230,000  
kilometers



405  
users



101  
clients



13  
countries